

Protected Areas Networks: *Achievements and Challenges*

by

Miguel A. Morales

Conservation International (CI)

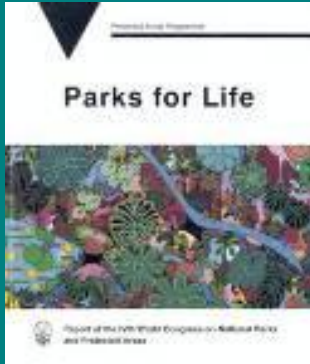
Protected Areas Management Advisor

Center for Applied Biodiversity Science (CABS/CI)



Protected areas are one of the world's most important and effective tools for protecting biodiversity





4th World Parks Congress - 1992 (Caracas, Venezuela)

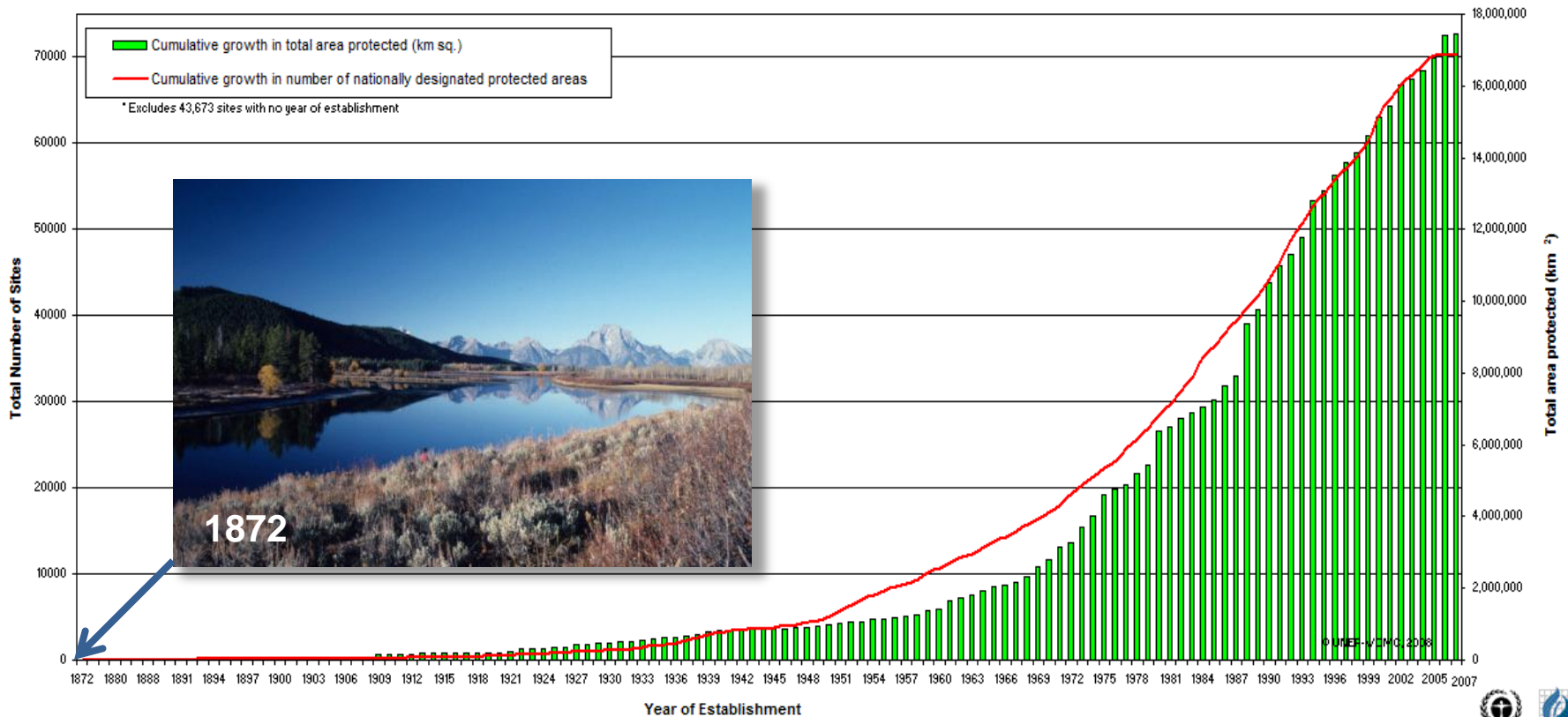
The Caracas Action Plan:

Expand the global protected areas network to cover at least 10% of each of the principal biomes by the year 2000



The Evolution of the Global PA Network: From Yellowstone NP to Today

Growth in Nationally Designated Protected Areas (1872 - 2007)*



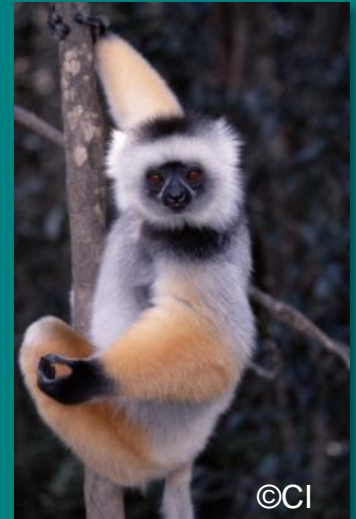
Source: World Database on Protected Areas (WDPA), a joint project between UNEP and IUCN, managed and hosted by UNEP-World Conservation Monitoring Centre (UNEP-WCMC), 31st January 2008. Please contact protectedareas@unep-wcmc.org for more information



5th World Parks Congress - 2003

(Durban, South Africa)

The global protected areas network coverage reached 11.5 % of the Earth's terrestrial surface

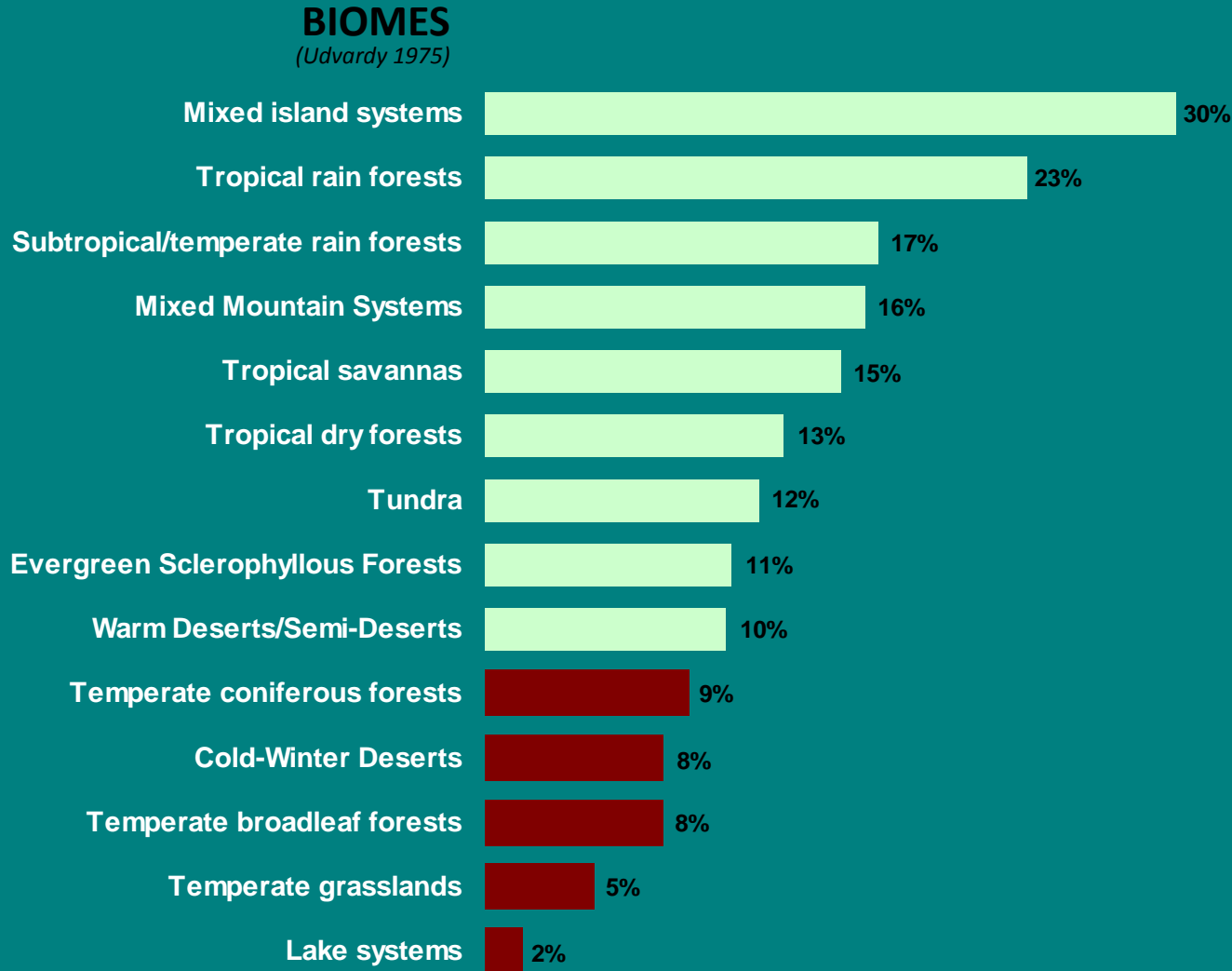


Current Global Network of Protected Areas

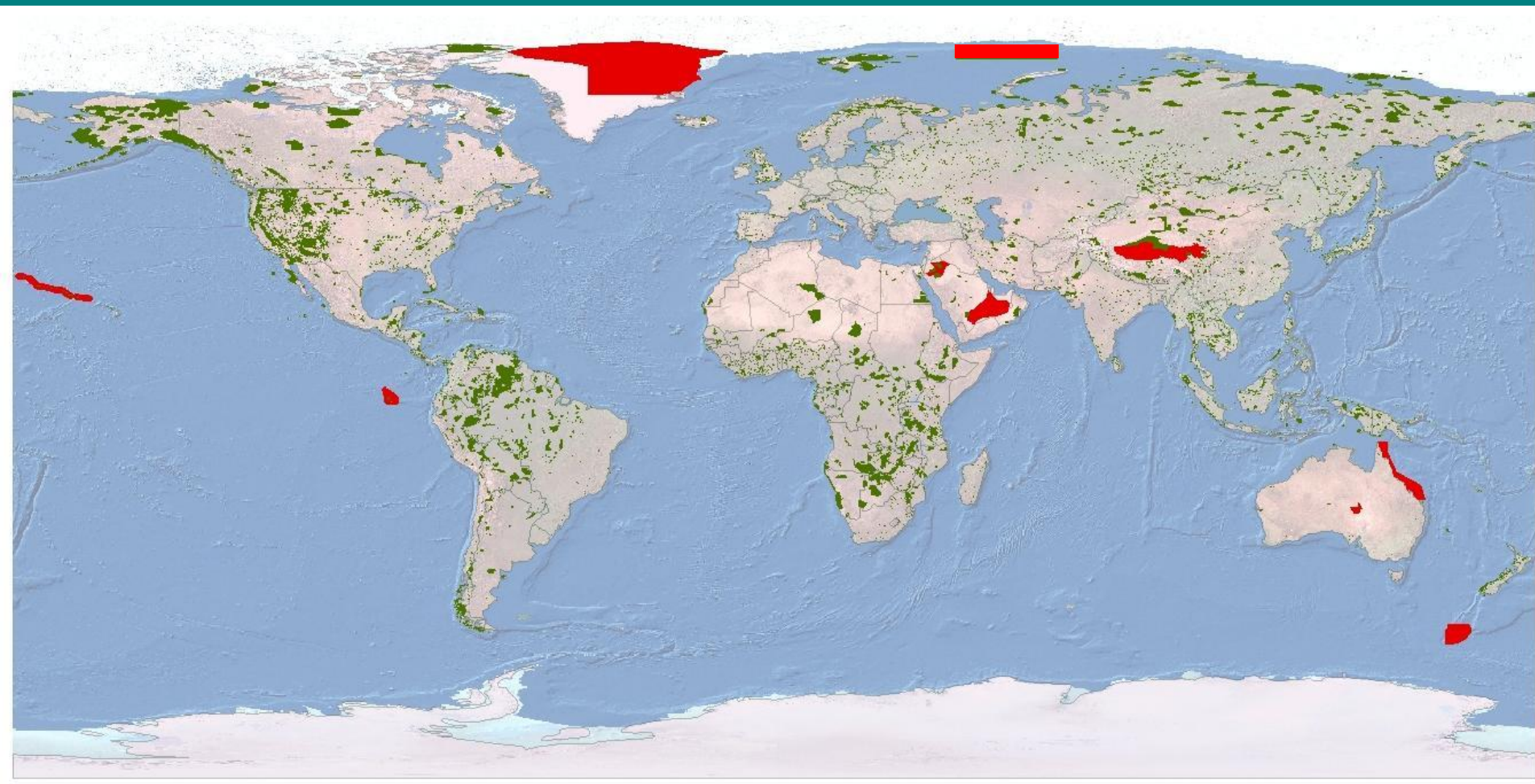


Today, almost all countries have a network of protected areas, and about 100,000 protected areas cover some 12% of the planet's land surface, making them one of most significant land use

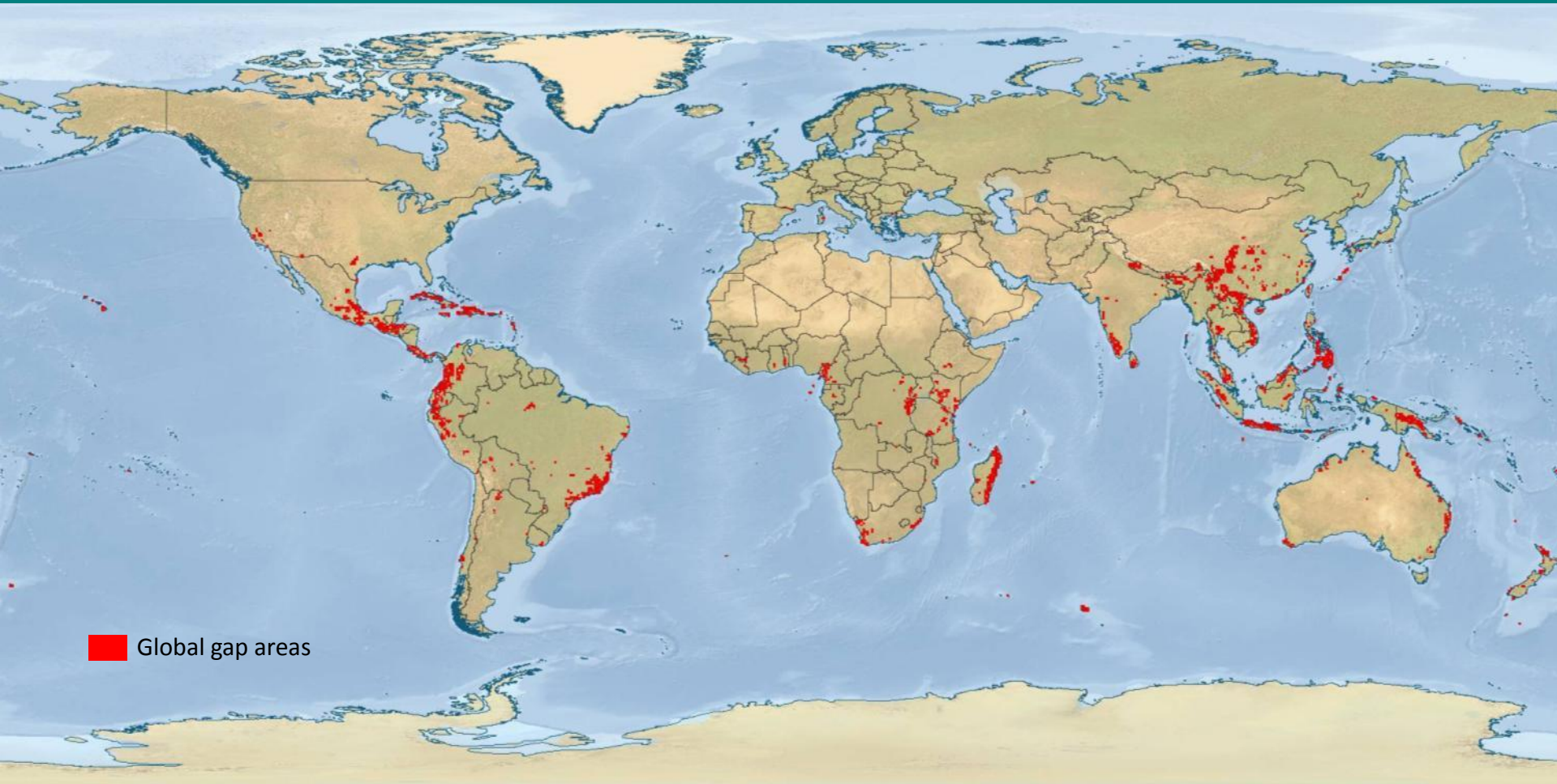
Percentage of Terrestrial Biomes Covered by Protected Areas (2003)



Current Global Network of Protected Areas



Global GAP Analysis



■ Global gap areas

Results

At least 1,424 species are gaps – they are not covered in any portion of their global ranges (12% of the species analyzed)

At least 804 globally threatened species are gaps (20% of the threatened species analyzed)

Other findings include issues of:

- Size of protected sites
- Geographic location
- Insularity



From Global to National Networks

Issues of Management and Security

Management

- < 25% well managed with a good infrastructure
- 17 to 69% had no management at all

Security

- 1% regarded as secure in the long term
- 1% badly degraded, loss of values for which protection was given
- 2% suffering various levels of degradation
- 60% currently safe but possible future threats



Towards Effective Protected Areas Networks

Overcoming Limiting Factors

- Conservation design (what, where, how much)
- Scale of implementation
- Adaptive management
- Stakeholder engagement & support



Towards Effective Protected Areas Networks

Overcoming Limiting Factors

- Public policy, legislation, and regulatory framework
- Institutional capacity
- Economic context
- Compliance & enforcement
- Financial sustainability



An aerial photograph of a river winding through a dense, lush green forest. The river is dark blue and reflects the surrounding trees. There are several small, light-colored patches of sand or rocks in the water. The forest is thick and covers the entire landscape.

Thank you very much